



MISSION GUIDELINES

Haiti Outreach Ministries is an evangelical Christian organization and strives to reflect God's grace in the world. We seek to witness by sharing our talent and skills with those in need. As part of an ongoing effort to address the needs of the community, both those served and those who travel to Haiti to serve, we created the HOM Mission Guidelines, which outlines our policies and rules and provides information to help teams prepare for their trip and provide guidance while on the mission field. Team leaders are asked to review the Team Leader Guidelines to help prepare for your trip. Using these resources and guidelines will help ensure a safe and rewarding experience for your team. Even experienced and returning teams need to review the guidelines: as it reflects the most current information regarding the changing needs and conditions in Haiti

MISSION GUIDELINES INDEX *(Information for All teams)*

1. Information for Mission Teams - *revised May 2017*
2. Airline and Travel Information for Mission Trips - *revised Jan. 2016*
3. Suggested Packing List - *revised Oct. 2014*
4. Things to Remember While Traveling in Haiti - *revised Jan. 2015*

ADDITIONAL INFORMATION *(See Forms and Resources)*

1. Application forms
 - a. Team Registration
 - b. HOM Risk Waiver Release Form – *revised Feb. 2014*
 - c. Team Member Health History
2. Team Vaccination Guidelines – *Mar. 2017*
3. Tips for Working with translators – *rev. Jan. 2014*
4. First Aid For Teams (includes suggestions for a First Aid Kit)

For more information about Haiti and HOM see "News – Newsletters and Brochures" at www.Haitiom.org

#1 INFORMATION FOR ALL MISSION TEAMS

HOM is committed to helping you have a safe and meaningful experience. The following resources will provide the information needed to prepare for your trip (and answer the most commonly asked questions!)

Getting there: Teams are responsible for making their airline reservations and travel arrangements. Airfare fluctuates between \$500 and \$800 per ticket. It is best to purchase your tickets as soon as possible to obtain the best rate. Our staff will meet you at the airport and assist with transportation to your accommodations. Saturday and Sundays are transition days with many teams arriving and departing; we do not have staff and resources to make multiple trips to the airport - **all team members must arrive on the same flight**. See *Travel Tips and Airport Information (page 7)* for more information about travel to and from Haiti.



Passport: A current passport is required to enter Haiti and for reentry into the U.S., Visas are not required. Carry a copy of your passport (separate from your passport and not in checked luggage). Remember to keep the green departure slip given to you in Haiti Immigration. Green Card holders (U.S. Resident aliens) must take their green card; you will not be allowed to leave Haiti without it.

Haitian Immigration and Customs: The address of where you are staying is required; use the Terre Noire (Blanchard) address: [Eglise Chretienne de Terre Noire, Carrefour Vincent, Rue David #48, Port-au-Prince.](#)

Mission Trip Insurance: We recommend med-evac insurance for each volunteer in the event that a medical emergency occurs and immediate care needed. Group plans are available from most insurance agencies or from American Express. Faith Ventures offers a flat rate per person; go to "www.faithventures.com" to apply. For more options, see International Travel Health Insurance Plans at www.gninsurance.com

Immunizations: CDC (Centers for Disease Control) strongly recommends the following immunizations:

- Dtap (Diphtheria-pertussis-tetanus) within 5 years. (even in the States, a pertussis booster is recommended)
- Hepatitis A and Hepatitis B (required if working on a medical team)
- Typhoid (oral dosage is effective for 5 years, injectable dose is effective for 2 years)
- Current Flu vaccine if traveling during winter months

Health Protection: Get all recommended vaccinations, see "*Forms and Resources*" for more information on vaccines for Haiti. Remember to bring all personal prescription and over the counter (OTC) medications. The CDC recommends anti-malarial medication (chloroquine, doxycycline and malarone are all effective); these medications should begin before you leave on your trip and continue after your return, so plan ahead! Use insect repellent (DEET 30) and sunscreen; wait 15 minutes between applying sunscreen and insect repellent (some sunscreens increase absorption of Deet). Spray Permethine ("Repel") on your clothing, hats, gloves and shoes (not to skin!).

GI upset and diarrhea may occur in spite of taking all the precautions. If this occurs, the recommended treatment is to take an Imodium and Pepto Bismo (tablets are ok) each time you have diarrhea and sip clear liquids only until it stops. If the diarrhea persists longer than a few hours, let your team leader and HOM staff know so that you can start taking Cipro (500 mg twice a day for 5 days). There is no data that taking Cipro as a preventative is helpful in preventing traveler's diarrhea and is not recommended. In fact, it can cause more problems by promoting resistant bacteria. If you have an upset stomach, consider using anti-nausea medication. Try to stay hydrated especially if you have diarrhea or nausea. Remember to drink plenty of fluids. Heat exhaustion and in some cases, heat stroke comes on very quickly in this hot, humid climate. Be prepared and do not over exert yourself when working. Report any illness to your team leader immediately!

First Aid Kits: Each team should have an emergency kit, which should contain all the medications you need for most common illnesses, pain medication (Tylenol), antibiotics and bandaging materials (*see Suggestions for First Aid Kits in Forms and Resources*). Please keep this kit with you at all times! If your team does not have a doctor or nurse, our MICECC doctors in the Cité Soleil clinic is available to you (Monday through Friday).

Fees: Room and board at the Terre Noire campus is \$40 (USD) per person, per day. The transportation fees are based on team size. Some teams may incur higher costs, for example, VBS and medical teams require more translators. Other team costs include medical, building, project supplies, and costs related to site seeing.

GUEST HOUSE FEES: The Terre Noire guest house is open to all teams and individuals that partner with HOM/MICECC. Guests working independently or with other organizations are welcome depending on room and staffing availability. A minimum of 7 people and a 2 night stay is required for guests not partnering with HOM. The guest house fee includes breakfast and dinner, laundry, all ground transportation including airport pickup/return, transportation to and from the work sites (work day 7 am - 5 pm), travel to all HOM/MICECC campuses, a trip to a grocery store and a trip to a beach, Port Au Prince or the mountains. *Please note that these fees do not include off site meals, project supplies, and entrance fees to the beaches (which does not include meals) or to the museums.*

4-9 people - \$40 per person per night plus \$600 (team) for transportation (tap tap) and 1 translator per week
10-18 people - \$40 per person per night plus \$1225 (team) for transportation (tap taps) and 2 translators per week
19-27 people - \$40 per person per night plus \$1900 (team) for transportation (tap taps) and 3 translators per week
28-36 people - \$40 per person per night plus \$2525 (team) for transportation (tap taps) and 4 translators per week

* Some teams require additional translators, cost for additional translators is \$20 per day

SITE SEEING OPPORTUNITIES AND FEES

The team fee includes one trip to either the beaches, Baptist Mission, Port Au Prince National Museum & Overlook, Apparent Project or Crois de Bouquet (metal village). If a team wishes to explore destinations located farther from our campuses, additional costs will apply. Optional opportunities for site seeing and after hour activities are only available if deemed safe and appropriate by our Haitian leaders. Some of the more popular trips and the additional costs are listed below.

Mirebalais, Fondwa, Saut-d'Eau, Cange: additional \$20.00 USD per tap tap or \$85 USD for 12 passenger van
Jacmel: additional \$85.00 USD per tap tap or \$135 USD for 12 passenger van

If a team wishes to have dinner outside of the Terre Noire Campus; the cost is an additional \$15 per tap tap and an additional \$5 for a guide. Teams must return to the Guesthouse no later than 8 p.m. Buying dinner for the driver and guide is much appreciated!

A second site seeing team trip may be arranged if time and schedules permit, costs to hire one tap tap and one translator for a day (7 a.m. – 5 p.m.) is an additional \$85.

If available, HOM/MICECC's 12 passenger van may be used for shorter trips, i.e. beaches or PAP site seeing for an additional \$30 USD per trip (*for teams with 10-12 people, this is much less than paying for 2 tap taps!*)

FEES FOR TEAMS STAYING OFF CAMPUS – We understand that for some teams, staying off campus may better meet your needs. The costs for ground transportation and translators are the same as outlined above. If the hotel/guesthouse offers airport transportation, deduct \$100 for teams smaller than 18 and \$200 for teams larger than 18 from the transportation costs. Contact information for recommended local hotels/guesthouse is found in the Mission Guidelines on page 5. As we have limited staff resources and want to ensure accurate communication, please contact these hotel/guesthouse directly for dates and rates. *Please do NOT ask our staff to help make arrangements for alternative housing on your behalf.*

AFTER HOUR AIRPORT PICK-UP: Due to safety and logistic concerns, we encourage all teams to arrive during the daytime (7 a.m. to 6 p.m.). If cost and schedule considerations result in choosing a late arriving flight, there is an additional \$5 per person fee for after-hours pick up. Please recognize that although we will take all precautions, there are increased risks in arriving after dark (getting through customs and robbery). We ask all teams to carefully consider these risks prior to choosing their flight. HOM/MICECC cannot provide transportation or assume responsibility for a team's safety on flights with a scheduled arrival time after 8 p.m. *If a flight scheduled to arrive between 7 a.m. and 6 p.m. is delayed, resulting in a later arrival, there is no additional charge for pick-up regardless of time of arrival.*

In most cases you may pay in advance, but **payment must be received at least 2 months prior to the trip** or must be brought to Haiti in the form of cash. Please check with us at least 3 months prior to your trip for current recommendations. Additional information regarding trip preparation are found in the *Team Leader Guidelines*.

Teams are responsible for providing lunches; tuna or chicken packs, fruit cups, cookies and granola bars all travel well, PB&J makes an easy lunch and ingredients are available locally. A trip to a local store to buy lunch or snack items can be arranged (prices may be higher than in the States for these items).

HOM Field Staff: HOM often has long-term volunteers, in addition to our Haitian staff, who serve as on-site field coordinators in Haiti. Our Haitian staff and volunteers provide assistance to teams at the guesthouse, worksites and the clinic. The HOM and Haitian staff coordinate with the team leader to provide a daily plan that includes project schedule and plan, meal times, staff and team meeting times, fellowship with Haitian leaders, devotions and site seeing opportunities. Please be considerate of our staff and volunteers, contact only the staff member designated as the after-hours duty person since we attempt to rotate responsibilities and provide personal time for our volunteers and staff.

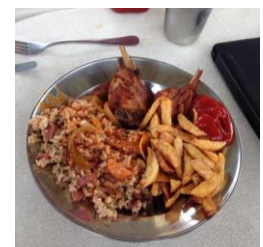


MICECC Facilities: HOM team projects will take place in one of MICECC's church campuses, in near-by communities or at the site of the new secondary school. Medical teams work out of our clinic on the Cité Soleil campus. Volunteer housing is available at the guesthouse in Terre Noire (Blanchard). The Terre Noire facility has a generator and solar panels for electricity. This provides for electrical necessities (i.e. water pump and limited air conditioning in the guesthouse), but not enough for extras like hair dryers. All electricity in Haiti is 110 volts with U.S. type receptacles. Battery operated fans are still encouraged in case of power outages.

Guesthouse: The guest rooms are located on the 2nd floor of the Terre Noire school building, the dining area is on the 3rd floor. We have several dorm style rooms for men and women and can accommodate up to 50 people. Each dorm contains wooden bunk-type beds with air mattresses and several small storage cubes for personal belongings. The dorm rooms have air-conditioning but battery operated fans are useful when electricity is not available. Bed linens, pillows and a few towels are available. Donations of towels and washcloths are appreciated. There are 4 bathrooms with showers; cold water only (sunny days may provide a slightly warmer shower). Internet access and a computer are available for teams to contact home. Due to broadband limitations– teams are asked to refrain from using Face Time or streaming music and videos.

All team members are encouraged to participate in the morning staff/team meeting, after-hours devotions and scheduled activities with Haitian leaders and staff at the Terre Noire campus. For teams staying outside the campus, arrangements can be usually be made to participate in the evening activities. Dinner starts promptly at 5:30 pm, there is a modest charge of \$5 per person. Transportation to and from Terre Noire after dark (before 8 p.m.) is considered safe but our Haitian leaders will advise if there are concerns.

Meals: Food provided will be typical Haitian fare, usually rice and beans. Chicken, Haitian stew or spaghetti may be served; fresh fruit juice and homemade bread are always available. Soft drinks are available for \$1 USD. Breakfast usually includes boiled eggs, fruit, bread and coffee. If you have food allergies or dietary restrictions, it would be best to bring suitable food supplies for your stay. Most meals may be acceptable to vegetarians but the cooks may use meat products in food preparation. There is clean drinking water at the Cité Soleil, Menelas, Terre Noire and Baryè Fè campuses. Bring a refillable container and always use the water provided for drinking, taking medication and brushing your teeth. Clean water is available at the clinic and work sites.



Mission Projects: Volunteer teams collaborate with HOM and MICECC to work with medical, construction, VBS, school and vocational projects. Although some teams may complete short-term projects, most will contribute to ongoing projects that require coordination between our Haitian leaders, staff and volunteer organizations.

Flexibility is vital as plans may change based on current needs, resources or unexpected problems. HOM and MICECC leaders work closely together to determine project needs and priorities. Scheduled workdays are Monday through Friday, with limited opportunities to complete jobs/tasks on the weekend. Saturday is a transition day with many teams arriving and departing allowing little opportunity for our staff to coordinate other activities. We observe the Sabbath on Sunday and seek to provide that as a day of rest for our Haitian staff and the communities. We encourage teams to use those days to prepare for upcoming week, attend church services and to site-see or visit our campuses.



MICECC and HOM make every effort to safeguard the safety and well-being of our teams and to promote the success of your individual mission trip and our ministry in Haiti. HOM's Mission Guidelines are the primary means by which we provide information, please review these guidelines prior to every trip. Every volunteer is expected to honor our guidelines and respect the leadership of our Haitian pastors and HOM staff.

Although many of the guidelines provide useful and practical tips for preparing for your mission project, some guidelines provide direction for the behavior, dress and attitudes expected from our volunteers while serving in Haiti. This is primarily a Christian organization, with teams' living and working within the church campuses and neighboring communities. Behavior and dress that may be appropriate in North America may not be acceptable in Haiti. *Any team whose member(s) fail to honor our guidelines regarding dress, alcohol and tobacco use, or acceptable behavior will be NOT be allowed to stay or work with HOM.* If there are questions regarding acceptable dress, behavior or projects: please contact us for further clarification prior to arriving in Haiti.

Age Restrictions: Due to safety concerns, ministry needs and consideration of youth's social, emotional, and psychological development, we allow team members age 15 or older to participate in HOM/MICECC projects. Team members age 15 are allowed only if accompanied by a parent. Youth, age 16, require parental permission and a signed consent (Risk Waiver Form) by the parent and individual. For families who wish to visit our campuses and mission projects sites, but not participate in a mission project nor seek housing, there is no age restriction but children must be supervised by parents at all times. There is no age restriction for older adults but all participants should be in good health and physically able to function in less than ideal conditions.

Accommodation Options Listed below are several area hotels and guesthouses that welcome mission teams; prices are per person and include some meals. Guesthouse prices range from \$40-\$50 per person, Hotel prices from \$55-\$90. Although accommodations may not be what one would expect in the States: rooms are generally clean, A/C and hot water are available on a limited basis. The guesthouses have dorm style rooms for 4-6 people while hotels offer private, double or triple rooms. All have English-speaking staff. *Due to limited staff and to ensure accurate communication, please contact these hotel/guesthouse directly for additional information and current rates. Please do NOT ask our staff to help make arrangements for alternative housing on your behalf*

- Eucalyptus Village (PAP airport transportation: \$15): www.eucalyptusguesthousehaiti.weebly.com, Email: eucalyptus.village@gmail.com. Weekly and group rates available
- Matthew 25 House (PAP airport transportation included) www.parishprogram.org/matthew-25-house, Email: matthew25house@yahoo.com
- The Palms Inn Hotel: www.palminnhotel.net. Email: sales@palminnhotel.net. Team discounts available (8 or more people), mention HOM, (PAP airport transportation included)
- Wall's International guesthouse: www.fida-pch.org/walls-international-guest-house Email: wallsguesthouse@gmail.com. Manager Direct Cell: 509-3703-4788 Team discounts available (10 or more people) PAP airport transportation \$30

* *HOM is not affiliated with, nor receives any financial incentives, from any of these hotels or guesthouses.*

Site-Seeing and Shopping: Teams are encouraged to explore Haiti; opportunities are available to tour Port-Au-Prince, the beaches, the overlook or the Baptist Mission on the mountain (day trips only). Due to safety and staff limitations there are few options for after-hours excursions. MICECC leaders and staff will advise if dinner off campus or attending an evening church service can be arranged. Costs for additional activities are outlined in the 2016 Guesthouse & Team Fee Schedule. A retail shop is located at the Terre Noire campus featuring products from the vocational program as well as local metal, stone and wooden crafts. Custom-made clothing items are available through our sewing program. All sales benefit the co-operative and its members.



Copyright: No one may use HOM name or logo on products produced for distribution without permission; please contact us at info@haitiom.org for more information about our policies.

Publicity: Photographs and videos of HOM's work in Haiti may result in the use of volunteers' and teams' images in print and electronic publications promoting HOM. Personal data will not be disclosed and every effort is made to protect individual privacy. No image will be used for profit and no volunteer will be paid or rewarded for use of their image. We ask teams to share their mission photos to help highlight the needs and work done by HOM, email photos to media@haitiom.org

Contact Information: Please contact us at the email addresses below and on the website as previous contacts may no longer be associated with HOM.

In Haiti: Leon Dorleans – Haiti phone 509-3726-6408 Email: leon.dorleans@yahoo.com
Team Coordinator – Haiti phone 509-4890-5763: trips@haitiom.org

We will provide additional contact information in your welcome email once you have scheduled your trip. This will include the name and local phone number of the staff member who will meet you at the airport and help coordinate your clinic/project while in Haiti.

The United States of America Embassy in Haiti Address: Boulevard du 15 October, Tabarre 41, Tabarre, Haiti, Phone: (509) (2) 229-8000, facsimile: (509) (2) 229-8027, email: acspap@state.gov

American Citizens Services Unit office hours are 7:00 a.m. to 3:30 p.m., Monday through Friday. The Consular Section is closed on U.S. and local holidays. After hours, weekend & holidays: Please call (509) (2) 229-8000. The Marine guard will connect you with the Embassy Duty Officer.

In the United States:

To contact a board member or for more additional details concerning HOM see "HOM Leadership" or "Contact Us" on the HOM website under "About HOM"

To schedule a trip: contact trips@haitiom.org

If you wish to coordinate a visit by our Pastors; Luc Aristhene, Profaité Medeus or Leon Dorleans to your church or community, please contact us at info@haitiom.org

To contribute to our mission efforts in Haiti: see "Volunteer" on the HOM website or Click "Donate Now" to make a contribution to the clinic, general fund or Cité Soleil classrooms. For more information on sponsoring a student: see "Sponsorship" on the HOM website (www.haitiom.org)

#2 - TRAVEL TIPS AND AIRPORT INFORMATION

HOM requires that all team members travel to Haiti on the same flight. Although there may be occasions when team members' travel originates from different cities, we encourage you to arrange for a central departing point from within the U.S. to Haiti. Exceptions are permitted only with prior approval from HOM/MICECC. The transportation fee includes one airport pick-up and drop-off per team, additional costs may apply for multiple trips. Due to safety concerns, we strongly encourage teams to arrive during daylight hours (7 a.m. to 6 p.m.), additional costs apply for after hour airport pickup (*see Fees*). Airport transportation is not available after 8 p.m.

Tip: *Fellowship Travel International* and *High Point 963* are two travel agencies that work with mission groups; go to www.fellowship.com - (800) 235-9384 ext. 166 and www.963missions.com - (800)-683-3335 for more information.

AIRPORT INFORMATION

Team members should arrive at the airport (typically) 2 hours prior to departure. Everyone must have a passport; Green Card holders must have their green card. Each team member should pack personal belongings in a backpack and/or carry-on suitcase. While some supplies are acquired in Haiti, most teams will check 1-2 suitcases per team member. There is a 2 checked bag per person limit for travel to Haiti. Many airlines charge \$25-\$35 per checked bag, check with your airline carrier for current guidelines and pricing. Each team will determine how luggage is distributed, you may be assigned to bring a suitcase with you or may be assigned one at the airport. We encourage teams to compile a master list for inventory purposes should a suitcase be lost. All team suitcases should contain a document stating that all medications and supplies were donated to support the ministry of the Cite Soleil church and clinic (*see "Insert for Luggage"*). The insert includes Pastor Leon Dorlean's address so airlines have a contact if luggage is lost.

Delmas # 3, Rue Guignard, Port-au-Prince, Haiti

All checked suitcases need to be carefully weighed (cannot exceed 50 pounds) prior to arriving at the airport to avoid paying fees or having to answer questions as you try to re-distribute medicine or work tools and supplies in today's cautious and suspicious airport environment. We recommend that one or two "team bags" be available for larger containers of liquids or extra snacks that you are not able to bring in your carry-on luggage.

In 2016, more teams have been stopped by Haitian custom agents; we recommend that teams be discrete and not use matching luggage tags or wear scrubs/team clothing to avoid attracting the attention of the Haitian custom officials who often target mission teams for additional inspection.

While in flight to PAP, you will be given two cards to complete. One is a white *Haiti Customs Declaration form* and the typically green form is the *Haiti International E/D Card (Visitor's Visa)*. You will be required to list an address of where you will be staying, use the Terre Noire address (make sure you have the address in your carry-on items). Write 'personal effects' on the customs form rather than listing everything in your luggage, the purpose of your trip is for vacation or pleasure.

Eglise Chretienne de Terre Noire, Carrefour Vincent, Rue David #48, Port-au-Prince.

ARRIVING AT PORT-AU-PRINCE INTERNATIONAL AIRPORT

Prior to departing the plane, have your passport or visitor's visa in a safe and easily accessible place. After leaving the plane, you will travel down a short hall to the Immigration area. At the first desk you will pay the \$10 USD tourist fee then proceed to Immigration. Couples may go through together; each person needs their own visitor card but there is only one white card per family. Put your passport and visitor's visa (green card) in a secure place, you will need both to depart the country. Next walk downstairs to baggage claim. Luggage carts are available for \$2; generally 3-4 suitcases will fit on a cart. It helps to have



some team members stand with the carry-on bags as others remove the luggage off the belt. It is important not to miss any bags! There will be many "porters" trying to help with your bags, just smile and say "no mesi". If you chose to accept help: offer a modest tip up front but remain in control of your luggage. Do not let anyone take your cart; they may not release it without additional tips.



Once you collect your luggage, continue to customs. Have your luggage claim tickets available, airport personnel will check that the luggage tag matches the claim tickets before allowing you to leave baggage pick-up. If possible, break into smaller groups to avoid attracting attention and being detained in customs. You will give the customs agent your white customs form as you exit. Once you pass through customs, exit as a group. There will be more Haitians waiting outside to help with your bags. Just smile, say "no mesi" and keep walking.

HOM/MICECC staff will be there to greet you, look for a sign with the name of your team leader or group. No one from HOM/MICECC is allowed inside the airport, be wary of anyone who claim they were sent to help you.

DEPARTING PORT-AU-PRINCE INTERNATIONAL AIRPORT

Advance preparation is helpful. Remove all old airline luggage tags, consolidate and re-label empty suitcases. It is important to know if a suitcase is checked in your name for custom purposes in Miami.

In Haiti, where traffic jams, flat tires, and other hazards can delay travel significantly, we will build in sufficient travel time to arrive at the airport. You may have a long wait, but the airport is air-conditioned and food is available. Once you arrive at the airport, there will be many airline porters waiting to help escort you into the terminal. A modest tip is expected. The new departure terminal is similar to most American airports with all airlines located in a central location. Once inside teams enter the waiting line as a group and follow airport staff directions for check-in. After luggage is checked and everyone has received boarding passes, proceed to Immigration and the gates or visit the gift shop located across from the airline check-in desk (a larger duty free shop is located on the first floor after immigration and security).



Each person should have his/her passport, boarding pass and green visitor's visa ready for check-in. Once baggage has been checked proceed to the security/x-ray checkpoint, expect to be patted down or checked with the hand held wand after you pass through the metal detector. Once through this checkpoint, you can shop in the duty free shop located on the first floor of the terminal or proceed to the waiting room at the departure gate. As of 2016 the Delta and Jet Blue airline waiting area is downstairs, all others are on the second floor. Once in the waiting area you **will not** be able to return downstairs. There is a second security checkpoint upstairs prior to entering the waiting area, once cleared you may proceed to the waiting area. Often there is a third check point prior to boarding the plane. Bathrooms and clean water fountains are in the waiting areas. Restaurants are on the first floor and balcony on the second floor.

MIAMI OR FT. LAUDERDALE AIRPORT (most U.S. international airports have similar procedures)

When you return you will go through immigration and customs. When entering the immigration area, watch for signs and security personnel for help on where to go. IMPORTANT do not use your cell phones or cameras until after you clear customs and immigration, they will be confiscated! After clearing immigration, proceed to the baggage claim area. There you will need to claim all checked bags and proceed towards customs. If a bag is assigned to you for the return trip, please try to be with these items. Try to avoid being sent to the agriculture line where all bags have to be scanned. If asked what is in your bags, tell them dirty clothes and medical/work supplies from the project you worked on in Port-au-Prince. After clearing customs, take the bags through a set of doors and to the left to be scanned for the flight to your home airport. You will go through the security checkpoint, after that, just relax until you are on your way home!

REGISTRATION:

We recommend that all team members register with the U.S. State Department (U.S. Embassy – Haiti) Go to: <https://step.state.gov/step/>. You will need your passport number, destination information and phone numbers; for purpose of trip; report humanitarian visit.

#3 - SUGGESTED PACKING LIST FOR TEAM MEMBERS

1. Shoes: shower shoes, one pair suitable for work (closed shoes recommended for safety) and one for church
2. Clothing: sleepwear, shirts, pants, skirt/dress, socks, underwear, and modest swimsuit (for beach/pool only)
Laundry is available at the Terre Noire guesthouse (clothing must be marked for easy identification).

Women: knee length skirt and shirt or dress (with sleeves) for church, skirt or slacks for clinic/worksite

Men: short sleeve shirt & slacks for church/work site (a tie for church is optional but appreciated)

Please do not bring short shorts or dresses, sleeveless shirts, tank tops, spandex or other revealing clothing. Knee-length shorts for men and women are acceptable after school and church hours and for site seeing but not recommended on the work-sites. Please bring clothing that fits within these guidelines as to maintain safety and avoid offense. Volunteers who do not adhere to these guidelines may NOT be allowed to stay or work with HOM.

3. Hat and sunglasses
4. Contacts, contact container (*and PLENTY of solution*)
5. Toiletries (*soap, toothbrush/paste, shampoo, deodorant*) *please limit curling irons, dryers, & electric razors*
6. Washcloths (*pillows and bed linens are provided at Terre Noire; towels are available in limited supply*)
7. Sunscreen - at least SFP 15 or higher and waterproof
8. Insect Repellent w/deet 30
9. Lip balm & eye drops (liquid tears)
10. Antibacterial hand wash/gel
11. Personal medications (*suggest Tylenol, Imodium and antacids in addition to prescription medications*)
12. Antibacterial wipes (*recommended to clean the tops of bottle, cans etc. before drinking*)
13. Camera and extra batteries
14. Flashlight and extra batteries (*needed at night after "lights out"*)
15. Battery operated clock
16. Personal battery operated fan and extra batteries (*highly recommend!*)
17. Earplugs & iPods for after hours (*Haitians roosters and dogs often start crowing/barking at 3 am*)
18. Cell phone – *there is little need for multiple cell phones in Haiti; we provide a local phone for team use.*
19. Refillable water bottle
20. Personal snacks (*granola or protein bars, peanut butter crackers, tuna packets - be imaginative!*)
21. Copy of your passport & your PASSPORT
22. Copy of your Green Card
23. Driver's license (*needed to use a credit card*)
24. Spending money (VISA & MC (accepted in some stores - *consider pre-paid credit cards*))
25. Bible, devotional and journal items
26. Copy of Medical license(s) for medical personnel

Do not bring expensive jewelry, computers and other valuable items to Haiti; we cannot be responsible for stolen or lost items or damage to electronics due to electricity surges while charging the battery. The lockboxes provided are very small and only hold a few items: such as cell phone, passport and camera.

Airlines are strict about carry-on items; you are allowed one carry-on bag and one other personal item such as a pocket book or backpack. Other items, such as a money belt, are considered a third item and will have to be stored in your carry-on bag. Liquids and gels must be no larger than 100 ccs (3 oz) and contained in a quart sized Ziploc bag (team leaders may allow space in the team's checked luggage for personal items that do not meet this criteria) Remember to remove all unessential items from your wallet; we recommend carrying only one credit card, driver's license and professional license. While traveling, keep ALL your documents and money on your person, NOT in your carry-on or checked luggage.



Lockbox at Terre Noire Guesthouse

#4 - THINGS TO REMEMBER WHILE IN HAITI

1. Protect your passport at all times. Make two copies prior to departure. Give one copy to the group leader, keep the second copy in a safe place separate from your passport and checked luggage.
2. The most common problem is petty theft. Please leave expensive jewelry at home; do not carry expensive items in your hand or on your person. Carry your backpack in front of you in crowded areas. Leave passports and other documents, credit cards, and cell phones at the housing site. Team lockboxes are available; please bring padlocks to secure these boxes. We cannot be responsible for stolen or lost items.
3. Do not leave the group without permission from the team leader and HOM/MICECC staff. Always travel in groups of two or more team members; never travel without a Haitian escort. HOM/MICECC leaders and staff will make final decisions regarding team travel and activities.
4. Please listen to the team leader and HOM/MICECC staff when he/she is giving directions, they are ultimately responsible for your safety. Ask questions, if you do not understand instructions or information provided, others in the group may be confused as well!
5. As representatives of a Christian based organization and out of respect for the Haitian culture, please refrain from conduct viewed as offensive: such as public displays of affection, consumption of alcoholic beverages, tobacco use or "colorful" language in the clinics, schools, churches and nearby communities.
6. Dress modestly! No tight fitting, short or revealing clothing in the schools, churches and communities. Be mindful of wearing t-shirts with provocative language or images. Knee length dresses or skirts are recommended for women, long pants are encouraged for women and men on work sites due to safety concerns. Scrubs are appropriate for medical team members in the clinic. Knee length shorts are allowed in Terre Noire after hours and for site seeing. It is inappropriate to sunbath in any area except at the beach or a pool. Even teams staying off campus are representatives of HOM, it is important that we do not distract the people from the message we want to convey, and to respect cultural and church customs.
7. There is NO safe public water in Haiti. Never drink water from the tap, always use the water provided for drinking, taking medication and filling water bottles. Do not rinse your toothbrush with water from the sink and try to avoid getting water in your mouth while showering. Carry anti-bacterial wipes to clean the contact surfaces of soda bottles, etc. Always check the source of ice prior to using it in a drink.
8. Be careful what you eat! Food served at Terre Noire or hotels is safe, but never eat from street vendors.
9. Please let your team leader know if you become ill while traveling or working in Haiti. Your first aid kit should contain appropriate medicine and medical supplies. Additional help is available if such a need arises.
10. Your ultimate purpose for being in Haiti is to share the love of God. Get to know our Haitian hosts. Meet people with a smile, a handshake and a "bon jou." (good morning).
11. Feel free to take photos, but be respectful of the people around you. Honor the people's right to privacy. Always ask permission before taking someone's picture. Be considerate of patients in the clinic, they may be reluctant to say no for fear of not receiving treatment. Be subtle with your photo taking; sometimes people photographed expect money for this privilege.
12. Keep mind that flexibility is vital; each trip is a unique experience when one considers the individual needs of the Haitian people and the dynamics of each volunteer team.
13. Do not share personal information such as email addresses or phone numbers. We discourage individual gifts, including gifts to children. If you wish to give an individual gift or donation, talk with the MICECC leaders.
14. Be cautious and refrain from petting Haitian dogs or cats even if they appear friendly.

